



HIGH EFFICIENCY AIR PURIFICATION SYSTEMS

FOR DATA CENTERS



REACTIVITY MONITORING SERVICE

CORROSION PROTECTION FOR ELECTRICAL AND ELECTRONIC EQUIPMENT



PROTECTION

Industries spend millions of dollars each year on valuable industrial electronic and process equipment that requires protection from the overall corrosion potential of their environment.

QUATRO's Reactivity Monitoring Service (RMS) diagnoses the corrosion potential of these environments according to the instrument Society of America's (ISA) Standard S71.04 outlining severity of corrosion from G1 (mild) to GX (severe) environments.

FEATURES

- Detailed analysis provided to assist in the following decisions: should supplemental environmental protection be provided, what method of protection is most suitable, how should the equipment be qualified for service in the intended application, and what is the priority of action for multiple locations.
- Location versatility—optional mounting in control rooms, instrument cabinets, control systems, or outdoor air source.
- Provides a qualitative and quantitative measure of the overall corrosion potential of an environment.
- Test methodology backed by years of site analyses in thousands of equipment applications worldwide.
- Meets field monitoring requirements for extreme sensitivity (<1ppb gaseous, <100 Angstroms film thickness).
- Fully compatible with ISA design criteria determining equipment reliability.
- Minimal space requirements.

APPLICATIONS

- Datacenters, telecommunications, central banking data servers.
- Electronic control rooms (pulp & paper, petrochemical, manufacturing, etc.)
- High technology industry (computer chip manufacturing, process rooms, etching areas).
- Outdoor air analysis (industrial facilities, compressor intake, archive storage facilities, hospitals, museums)

MEASUREMENT PARAMETERS

Each test site is classified according to ISA Standard S71.04. Basic class designations are as follows:

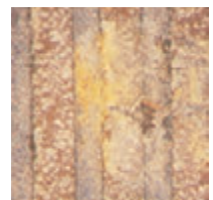
- G1** An environment sufficiently well-controlled such that corrosion is not a factor in determining equipment reliability.
- G2** An environment where the effects of corrosion are measurable and will have a detrimental effect on equipment reliability over time.
- G3** An environment where a high probability of corrosion attack will occur. This level is not acceptable for modern control equipment.
- GX** An environment where only specially designed and packaged equipment should be expected to survive.



G3 Environment
Pore corrosion and corrosion creep.



GX Environment
Severe pore corrosion, corrosion creep and physical degradation.



Severe GX Environment
Severe pore corrosion, corrosion creep and physical degradation, corrosion migration causing short circuiting.

G3
HARSH

Gx
SEVERE



POSITIVE PRESSURIZATION

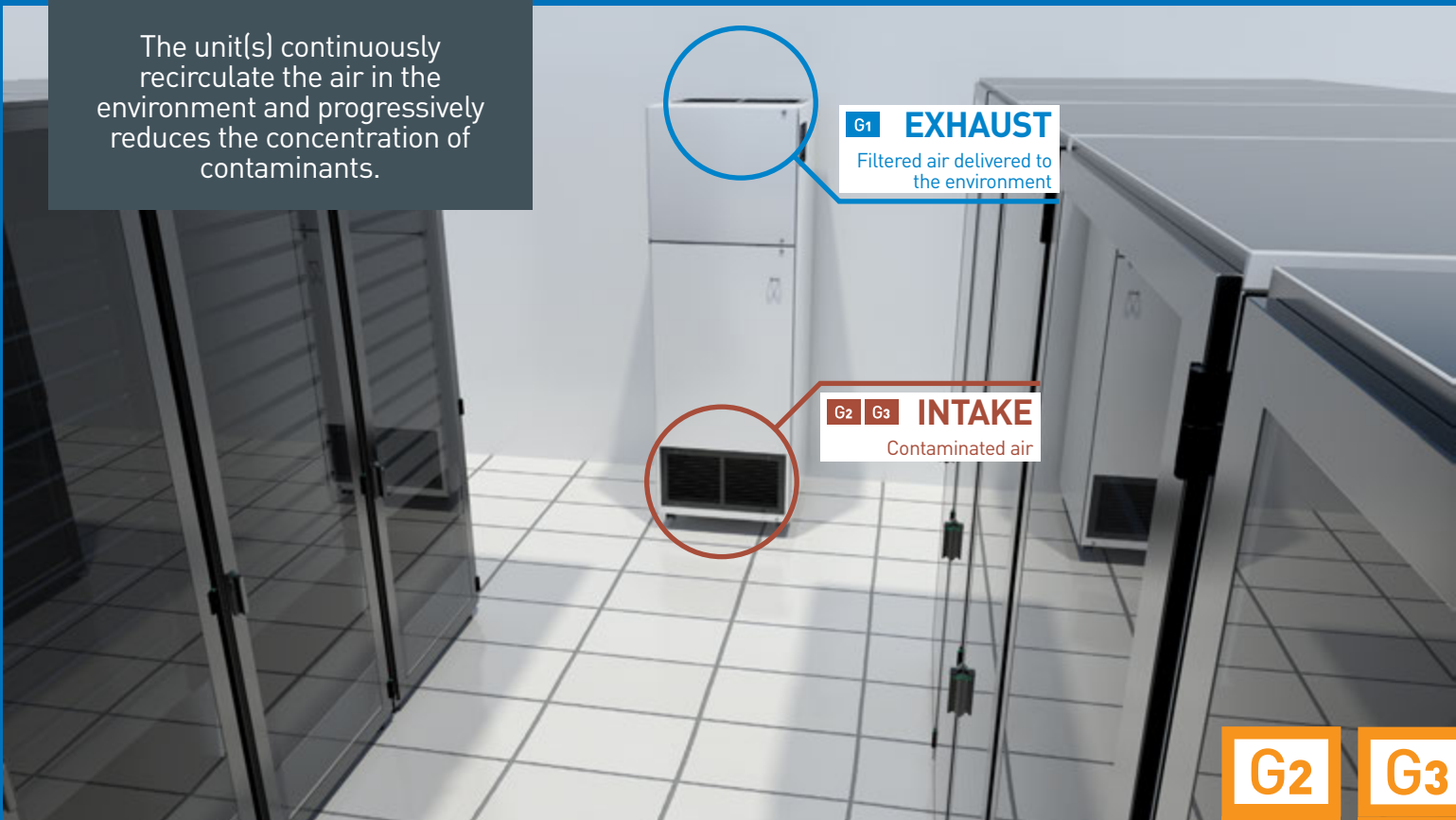
The unit delivers a high volume of filtered, contaminant-free air directly to the cabinet, creating a positive pressure environment.

CUSTOM SOLUTIONS

TAILORED TO YOUR SPECIFIC NEEDS

RECIRCULATION

The unit(s) continuously recirculate the air in the environment and progressively reduces the concentration of contaminants.



G2
MODERATE

G3
HARSH

G3

HARSH

Gx

SEVERE

CSA600

HEAVY-DUTY AIR PURIFIER

Engineered to protect sensitive electronics operating in corrosive environments (up to GX classification)



Corrosion of contacts and components on circuit boards accounts for 30 to 40% of all equipment failures. The **eCorrosion** is caused by an unmanaged environment consisting of combinations of uncontrolled temperature and humidity, along with harmful corrosive gases inside the electronic equipment rooms. Early life failures due to eCorrosion could result in unplanned warranty, and other maintenance and replacement related costs.

PRODUCT HIGHLIGHTS

- Dual high speed turbine for high airflow
- Whisper quiet operation
- Multi-stage filtration system
- Custom filter configurations available
- Front door access to filters for easy service
- Intelligent controls, digital speed control, audible & visual alarms

Air Flow:	0-411 m ³ /h / 0-242 CFM
Max Pressure:	42" W.C. / 10.5 kPa
Motor(s):	1.2 kW brushless blower
Voltage:	120V or 230V
Dimensions:	13"W x 21"D x 45"H / 330mm x 533mm x 1143mm
Filter Sequence:	Antimicrobial high capacity bag filter (F128) 23" deep bed custom chemical filter
Discharge:	1.5", 2", 2.5", 3" or 4" discharge collars
Sound Level:	52 dBA at full speed
Controls:	Remote ON/OFF, communication capabilities, audible and visual alarms

STANDARD CONFIGURATION



QUATRO
AIR TECHNOLOGIES INC.

airpurifiers-r-us.com

Quatro reserves the right to modify any specifications, at any time without prior notice.

G2
MODERATE

G3
HARSH



AF2000

HIGH EFFICIENCY AIR PURIFIER

Designed to handle high concentrations of chemicals, gases, odors, and particles, AF2000 delivers superior air quality for datacenters.



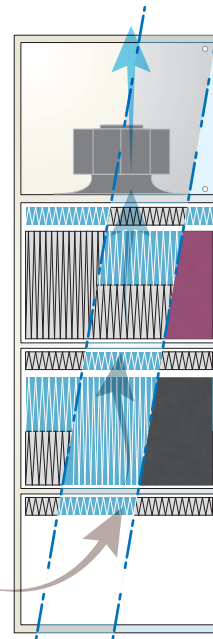
Data centers are dynamic environments where maintenance operations, infrastructure upgrades, and equipment changes take place regularly, leading to possible introduction of airborne contaminants. Data centers also house other contaminants, such as chlorine, that can be emitted from PVC insulation on wires and cables if temperatures get too high.

The AF2000 high efficiency air purification systems are used on a large scale in datacenters, providing a contaminant-free environment.

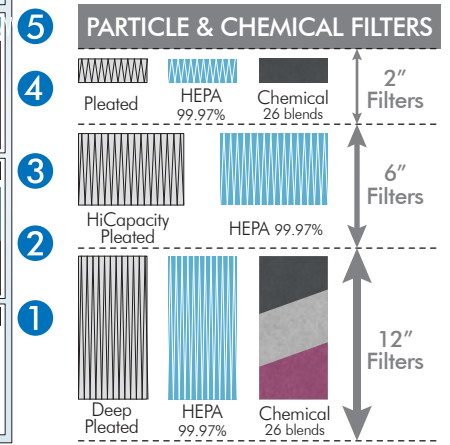
STANDARD CONFIGURATION

- Very high volumetric flow rate
- Whisper quiet operation
- Multi-stage filtration system: pre-filter, HEPA and chemical filter
- Custom filter configurations available
- Front door access to filters for easy service
- Intelligent controls, digital speed control, audible & visual alarms

Air Flow:	Nominal 1700 m ³ /h / 1000 CFM
Voltage:	120V or 230V
Dimensions:	24"W x 26"D x 71"H / 610mm x 660mm x 1800mm
Filtration:	Pre-filters Chemical filter, up to 100 lbs / 45kg Medical grade HEPA filter(s) 99.97% (or 2nd stage Chemical filter)
Inlets/Discharge:	Adjustable grilles
Sound Level:	Whisper quiet, 54 dBA
Controls:	Remote ON/OFF, communication capabilities, audible and visual alarms



5 STAGE FILTRATION SYSTEM



ETL 3087792
CONFORMS TO:
UL STD 507
Intertek
CERTIFIED TO:
CSA STD C22.2 NO 113

RoHS
COMPLIANT

CE

QUATRO AIR TECHNOLOGIES INC. 1-800-626-0664, airpurifiers-r-us.com

Quatro reserves the right to modify any specifications, at any time without prior notice.

G2
MODERATE

G3
HARSH



-  **HEPA FILTER**
-  **REFILLABLE CHEMICAL FILTER**
-  **INLET & DISCHARGE COLLARS**

AF1000

HEAVY DUTY AIR PURIFIER

Continuous duty operation, and superior air filtration for small to medium indoor applications.

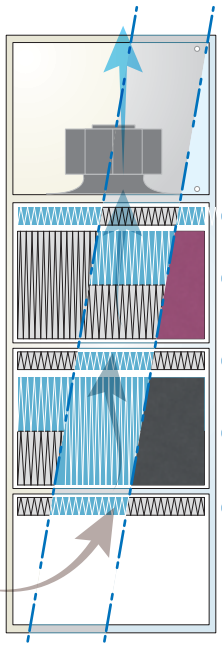
Using a 5 stage filtration system, this versatile and cost-effective unit offers enhanced protection against a wide range of airborne pollutants including chemical compounds, gases, odors and particles.

For specific applications that require localized removal of airborne pollutants, the AF1000 can be fitted with various ducting accessories or articulated fume capture arms.

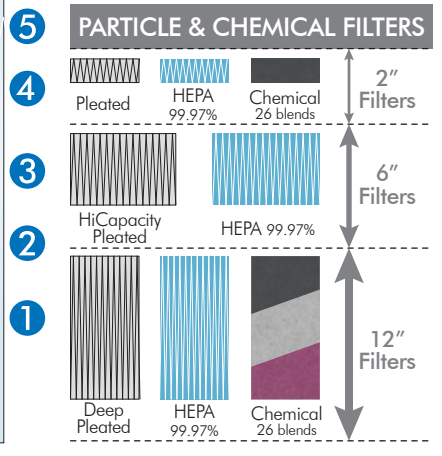
STANDARD CONFIGURATION

- High volumetric flow rate
- Whisper quiet operation
- Multi-stage filtration system: pre-filter, HEPA and chemical filter
- Custom filter configurations available
- Front door access to filters for easy service
- Intelligent controls, digital speed control, audible & visual alarms

Air Flow:	Nominal 1019 m ³ /h / 600 CFM
Voltage:	120V or 230V
Dimensions:	16"W x 22"D x 53"H / 400mm x 560mm x 1320mm
Filtration:	Pre-filters Chemical filter, up to 100 lbs / 45kg Medical grade HEPA filter(s) 99.97% (or 2nd stage Chemical filter)
Inlets/Discharge	Adjustable grilles
Sound Level:	Whisper quiet, 54 dBA
Controls:	Remote ON/OFF, communication capabilities, audible and visual alarms



5 STAGE FILTRATION SYSTEM



 3087792
CONFORMS TO:
UL STD 507
Intertek
CERTIFIED TO:
CSA STD C22.2 NO 113

 **RoHS**
COMPLIANT 

G2

MODERATE

G3

HARSH

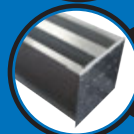
AF600

VERSATILE AIR PURIFIER

Engineered to improve indoor air quality, AF600 removes both particulate and gaseous contaminants.



HEPA
FILTER



REFILLABLE
CHEMICAL
FILTER



INLET &
DISCHARGE
COLLARS



The AF600 features interchangeable HEPA, pleated and chemical filters that allow the unit to be easily reconfigured on-site for particle or chemical filtration, or both.

With a small footprint and negative/positive air ready AF600 offers superior protection for small indoor areas.

- High volumetric flow rate
- Whisper quiet operation
- Multi-stage filtration system: pre-filter, HEPA and chemical filter
- Custom filter configurations available
- Front door access to filters for easy service
- Intelligent controls, digital speed control, audible & visual alarms

Air Flow:	Nominal 1019 m ³ /h / 600 CFM
Voltage:	120V or 230V
Dimensions:	16"W x 22"D x 53"H / 400mm x 560mm x 1320mm
Filtration:	Pre-filters Chemical filter, up to 100 lbs / 45kg Medical grade HEPA filters 99.97%
Inlets/Discharge	Adjustable grilles
Sound Level:	Whisper quiet, 54 dBA
Controls:	Remote ON/OFF, communication capabilities, audible and visual alarms

PRODUCT
HIGHLIGHTS

STANDARD
CONFIGURATION



QUATRO
AIR TECHNOLOGIES INC.

1.800.626.0664, airpurifiers-r-us.com

Quatro reserves the right to modify any specifications, at any time without prior notice.